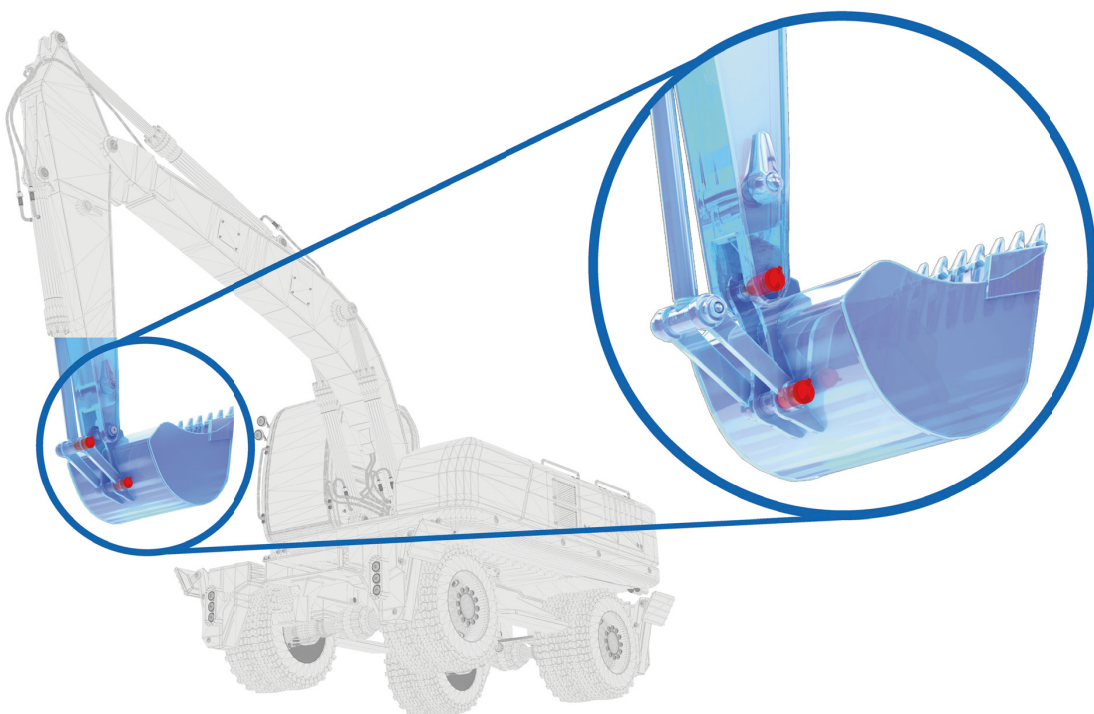


## APPLICATION EXAMPLE ▶ Construction machine ▶ Swivel bearing (inside)



### Task

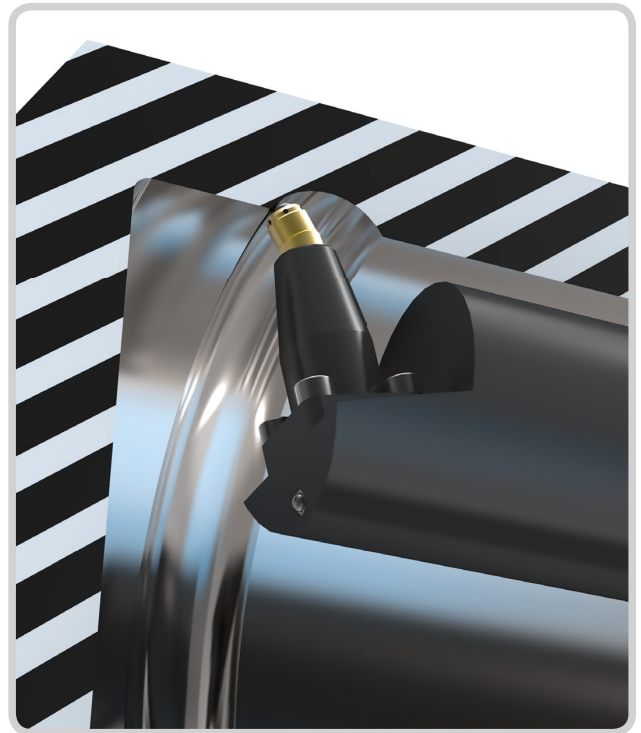
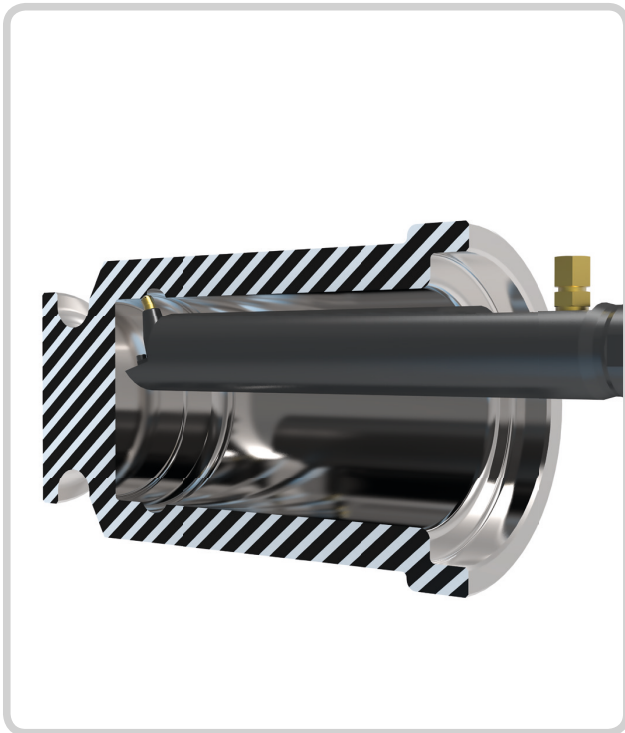
Economical generation of a bearing raceway





## Solution

Processing combination of hard turning and hard roller burnishing



## User benefits

- Process time reduction by about **50%**
- Surface area increased by a factor of about **1.8x**
- Process stability increased by a factor of **2.5 x**

## Details

- Workpiece ..... Swivel bearing
- Part of ..... Excavator shovel
- Material ..... GGG
- Tensile strength ..... 1000 N/mm<sup>2</sup>
- Hardness ..... 60 HRC

## Parameter

- Tool ..... HG6-2
- Circumferential speed ... 20 m/min
- Feed rate ..... 0,1 mm/rev.
- Rolling force ..... 1000 N
- Cycle time ..... ≤ 1 minute